

Train Rides to Ramble, Wye: Route 2

Through the Gap

Wye Railway
Station



0 1/2 1 mile
0 1 km



The River Great Stour

- Walk route
- Footpath
- + + + Byway Open to all Traffic
- ! Caution at this point
- ☕ Pub



Crown Copyright and database right 2011. Ordnance Survey 100019238.

Distance

8 miles (13 km)

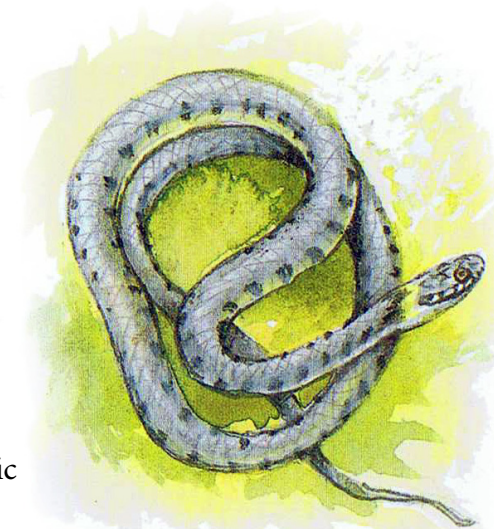
Time

4.5 hours

A gentle walk through the Wye Gap, returning to Wye via Brook village and its wonderful wood.

À travers la brèche

Une marche facile au milieu de la trouée constituée par le village de Wye, le retour à Wye s'effectuant via le village de Brook et son merveilleux bois.



Grass snake

This walk is taken from the *Train Rides to Ramble in the Stour Valley* series of publications, which feature full walk instructions. For a copy, contact the Kentish Stour Countryside Partnership on 01233 813307.



Designed by Clarity Interpretation 01303 249501 www.clarity-consultancy.co.uk