



Bee orchid at Jumping Downs

Jumping Downs

Tucked away in the countryside near Barham is a little known nature reserve called Jumping Downs. The site is owned and managed by a Trust with help from the KSCP. It was purchased in 2000, up until then it had been used for motorbike scrambling. It is now managed for wildlife and the community. The whole site is on a slope giving the determined visitor a fantastic view from the top. Management is largely based around the increasingly rare chalk downland habitat that exists on the site. There are a wide range of plants and animals that rely on the grassland, from orchids, to adders. The reserve is open to the public all year round. If you have a group interested in visiting, the KSCP will be happy to arrange a guided tour.



Heath Fritillary

Countryside events around Canterbury & the Wantsum

- Wye Farmers' Market** — Wye Green - first and third Sat. of the month
- Sandwich Town Council Farmers' Market** Guildhall Forecourt. Last Sat. of each month 9.00-1.00pm
- Bridge Summer Fete** — Bridge Primary School on Conyngham Lane. Sat. 14th June starts at 12.00
- Heath fritillary walk** — Blean Woods NNR car park. Sun. 22nd June 2.30pm. RSPB £2.50/£1.50 01227 455972
- Sandwich and Pegwell Bay** — Sat. 21st & Sun. 22nd June 10-4pm. See a complex mosaic of habitats, home to a huge variety of waders & wildfowl as well as rare orchids. Bird watching experts will be available with binoculars & telescopes to give information & guidance on specific birds that can be seen
- Reptile Valley** — King's Wood, main car park. Sun. 22nd June 9am-12. Friends of King's Wood £2 to non members. Further details 07523 203458
- Chislet Fair** — Chislet Court Farm - Sat 28th June starts 1.00pm
- Visit the Historical Rural Life Collection** — King's Wood, main car park. Sun. 6th July 10.30am-12.30. Friends of King's Wood £2 to non members. Booking Essential. Further details 07523 203458
- Blean Pre-school's 40th Anniversary Fete** — Blean Recreation Ground – Sat 12th July 2.00pm onwards
- Butterflies & Wildflowers** — King's Wood, main car park. Sat. 19th July 11.00-1.00pm. Friends of King's Wood £2 to non members. Further details 01233 813307
- No Mans Orchard, 60 years on** — No Man's Orchard, Chartham Hatch - Sat 26th July. 01233 813307
- Six Mile Ramble** - King's Wood, main car park. Sun. 10th Aug 10.00-1.00pm. Friends of King's Wood £2 to non members. Further details 07523 203458
- Herne Family Fun Day** — Canterbury Road, Herne - Sun. 17th Aug. 1-5pm. Fun Dog Show, Classic Cars, Birds of Prey Display, Stalls, Games, Rides, Face painting etc. Admission free. 01227 742700 for details
- Sandwich Festival** —over the August Bank Holiday weekend - 01304 613293 for details
- Sandwich Heritage Open Days** —13th & 14th Sept. 01304 613512 for details
- Challock Goose Fair** — 14th Sept.
- Dormouse Survey** — King's Wood, main car park. Sat. 20th Sept. 9.30-12.30pm. Friends of King's Wood £2 to non members, Booking Essential. Further details 07523 203458

Volunteering

Come along and lend a hand with a variety of enjoyable and worthwhile practical conservation projects throughout the Stour Valley!
For our detailed programme phone us on 01233 813307 or go to our website and click on 'get involved'.

Volunteer days

- Wednesdays (Ashford area):** Meet 9.15 at the KSCP Offices.
- Thursdays (Canterbury & Wantsum):** Meet 9.15 at KSCP offices or 9.45 at North Lane Car Park, Canterbury.

KSCP publications, for those who enjoy the countryside



Train Rides to Ramble (£3.99) & Bike Trails by Train (£2.50) Circular walks and cycle rides from railway stations in the Stour Valley. Full colour, clear maps and



Stour Valley Walk & Elham Valley Way (£5.00) Recreational walks produced by Kent County Council with help from KSCP.



Wildsites (£1.00) A guide to 31 wildlife sites in the Stour Valley.

All available from local Tourist Information Centres, quality bookshops, KSCP, and Kent County Council (08458 247600 or env.publications@kent.gov.uk)

Stour View - Ashford & The Low Weald, Downs, Canterbury & Wantsum is produced in January, May and September. Stour View is printed on Elemental Chlorine Free paper from wood pulp from sustainable forests and includes recycled fibre.



The countryside & urban green space newsletter for people living in & around Canterbury & the Wantsum area

Stour View

Canterbury & Wantsum

Issue 40
Summer 2008

CONSERVING, ENHANCING AND PROMOTING THE COUNTRYSIDE AND URBAN GREEN SPACE OF THE STOUR VALLEY

Canterbury is surrounded by special ancient woodland and protected landscapes and has the only major river in East Kent flowing through the city. The River Great Stour is a beautiful asset for the area and is designated as a Local Wildlife Site. The most important wildlife site along the river is Stodmarsh National Nature Reserve, being a premier reedbed habitat. Between Canterbury, Reculver and Sandwich is the old Wantsum Channel, reclaimed from the sea, with pretty villages lining what used to be the old shoreline.

If you would prefer Stour View to be emailed please provide your email address

Goats at the Ready



Canterbury College hedge planting

Wraik Hill and Foxes Cross Local Nature Reserve has seen a lot of the KSCP volunteers recently. The reserve near Whitstable is undergoing some improvements made possible by a £12,431 grant from Viridor Credits. Working with Canterbury City Council and the Kent Wildlife Trust, it is hoped that goats will be grazing the site this winter. Grazing animals are often used as a conservation management tool, they can graze areas that are impossible to mow. The goats will hopefully maintain the floristic importance of the site, stopping it from reverting to scrub. This in turn will allow more butterflies and birds and many other species to colonise. The KSCP have already planted a hedge. Other work planned for the project includes major scrub clearance with a machine, and the creation of a pond.



Nightingale at Wraik Hill



Viridor Credits funds a range of Environmental and Community Projects

Viridor Waste Management Ltd is the name of the company that took over the Shelford Landfill Site to the east of Canterbury from Brett in 2006. Viridor Credits operates the Landfill Communities Fund which provides grants for environmental or community projects such as improving green spaces or village halls. Funding is usually limited to £20,000 but in special circumstances groups can apply for more. Projects have to be within a 10 mile radius of the Shelford Landfill Site, which therefore includes the whole of the Canterbury District and the fringes of all the neighbouring Districts. For further information tel: 01823 327221 or visit www.Viridor-Credits.co.uk.



Seals from the Sandwich River Bus

Messing about in boats

The river Great Stour is a wonderful place to visit at all times of the year. If you're stuck for something to do this summer, why not think about seeing the Stour from a different angle. Trips along the river give you a unique experience in seeing the river at a slower pace and a chance to appreciate all the plants and wildlife that live along it. River trips that are available: historic boat trips with Canterbury River Tours (enquiries@canterburyrivertours.co.uk); punting trips from Canterbury River Navigation (01585 318301) through the centre of Canterbury; and Wildlife watching trips, including the chance to see seals in the estuary, from the Sandwich River Bus (www.sandwichriverbus.co.uk).

Project Sponsors



Every effort has been made to ensure that the information contained in this publication is accurate. The publishers can accept no responsibility for any errors or omissions. The views expressed in this newsletter are not necessarily those of the Kentish Stour Countryside Project.

No Man's Orchard '60 Years On' - Saturday 26th of July

'60 years on' is the title of the event to celebrate No Man's Orchard 60th year since its planting. The orchard near Chartham Hatch, primarily consists of large Bramley trees, is a Local Nature Reserve and a Community Orchard. The event will highlight the importance and value of traditional orchards, not only for heritage reasons but also for the wide variety of wildlife that rely on these orchards. There will be lots to see and do with demonstrations, including a full size cider press; information on the wildlife of traditional orchards; a photo display of the orchard through its history; games and activities for the whole family; live entertainment from the Canterbury Brass Band, and Oyster Morris. Food and drink will be for sale including a hog roast, local cider and juices from Tiddley Pomme, and local ales provided by the Campaign for Real Ale (CAMRA). The day will also include the unveiling of a new sculpture which will sit in the orchard for years to come. The event is being organised by No Man's Orchard Management Committee. Further information from KSCP.



An event at No Man's in 2006



Moth trapping

The Denge Woods Project

The Denge Woods Project, part of Butterfly Conservation's South East Woodland Project is working with woodland owners, and the public to improve habitat conditions for woodland specialist butterflies and moths. The area, between Ashford and Canterbury, contains a high proportion of ancient woodland, found largely on the clay plateaus of the Downs. Many of our rare and declining woodland species, including duke of burgundy, grizzled skipper, white admiral, drab looper and waved carpet are recorded here. There are many opportunities for you to get involved with the project including enjoying project events. The project needs your help to look for and record butterflies and moths, and assess habitat suitability across the project area... if you're interested in helping, please get in touch with the project officer Fran Thompson—ftompson@butterfly-conservation.org tel. 01303 815171

The Humble Bumble

They're cute and furry, defy gravity (everyone, except the bumblebee itself, knows that a bumblebee can't fly) and are possibly the most important pollinators in the countryside.

There are about 22 different species of bumblebee found in the UK and although they do sting they will only use this as an ultimate last defence, knowing they will die soon after. A single queen starts each bumblebee nest afresh in the spring. She will have hibernated for the cold winter months in an underground hole.

Britain's native bumblebees are under serious threat. The key reason for this mass decline (over 60% in some species) is the loss of wildflower-rich hay meadows that have been ploughed up and sown with rye grass grown for silage.

Gardening for bumblebees requires providing a constant source of nectar-rich plants throughout spring, summer and autumn. Many modern hybrids flowers are sterile and lack vital pollen and nectar. The following are especially good: bluebells, bugle, rosemary, dead-nettle, geraniums, foxglove, honeysuckle and monkshood. It's also easy to provide nest sites, simply leave a few 'untidy' patches around the garden or keep areas of permanently tall grass around the bottom of a hedge. This will encourage small mammals to nest, and once abandoned, the old nest will make an ideal starter home for a bumblebee. For the more ambitious, take a tennis ball-size lump of moss or other similar dry natural material and put it at the end of a hole poked in a bank; in an up-turned flower pot with a hole in the bottom or under a piece of roofing felt in tall grass.



Buff-tailed bumblebee

For free bumblebee ID chart, visit the Natural History Museum's website <http://www.nhm.ac.uk> and click on research and curation.

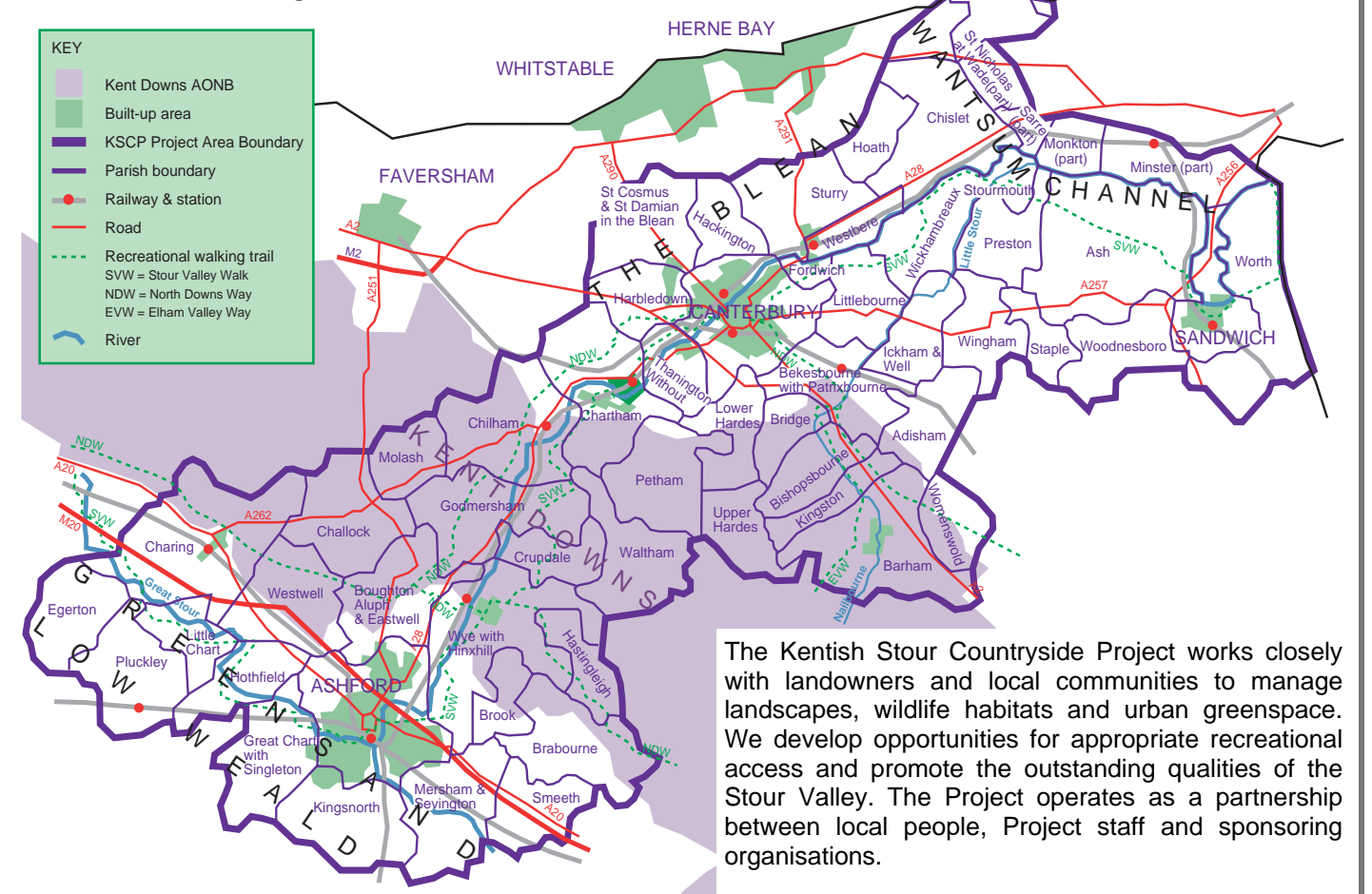
Introducing the Kent Cheese Company

Penstock Farm, nestling at the foot of the Downs in Brabourne, grazes over 80 ha (200 acres) of downland with their herd of British Friesians. The environmentally sensitive farming methods applied through Countryside Stewardship and Entry Level Stewardship, have enabled farmer and producer George Jessel to recently create a range of irresistible cheeses. Brabourne Brie, Chaucers Choice, and Kentish Crown are available from a host of local farm shops including Perry Court, Taywell, Evegate, MacKnades and Lower Hardes. George prizes his cheeses on their distinct characters and flavours. Supporting local produce will keep rural economies alive and celebrate local customs and landscapes. More information on the Kent Cheese Company is available at www.kentcheese.co.uk.

George Jessel with one of his cheeses (courtesy of www.leejorobinson.com)



About the Project



The Kentish Stour Countryside Project works closely with landowners and local communities to manage landscapes, wildlife habitats and urban greenspace. We develop opportunities for appropriate recreational access and promote the outstanding qualities of the Stour Valley. The Project operates as a partnership between local people, Project staff and sponsoring organisations.

Kentish Stour Countryside Project

Sidlands Farm
Wye
Kent TN25 5DQ
Tel: 01233 813307
E-mail: kentishstour@kent.gov.uk
www.kentishstour.org.uk

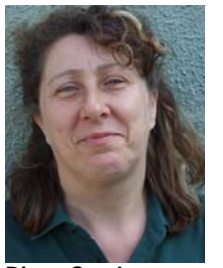
Project Manager: Jon Shelton
Ashford Countryside Officer: Debbie Adams
Canterbury & Wantsum Countryside Officer: Matt Hayes
Project Officer (P/T): Diane Comley

Staff changes at KSCP, bye for now to Craig & welcome Diane Comley



Craig Edwards

Craig Edwards, long time volunteer and recent member of staff, completed his short-term contract with KSCP in April and ventured north to the Farne Islands for a 3 month stint with the National Trust. He's currently trying to avoid being harmed whilst monitoring the tern population! Diane Comley joined us in April for a 6 month part-time contract working principally on projects in Ashford and the Blean. Diane recently graduated from Hadlow College and teaches photography as her other job.



Diane Comley

The North Downs Way 1978 - 2008

The popular **North Downs Way National Trail** is celebrating its 30th birthday this year. One of 15 National Trails in England and Wales, the 153 mile route has given walkers, cyclists and horse riders from around the world plenty to enjoy over the last three decades.



Celebration events are planned including a special birthday party on **September 13th** at Withersdane Hall near Wye complete with a Guinness Book of Records world record attempt and a series of guided walks. Find out more about the North Downs Way and the birthday celebrations by visiting www.nationaltrail.co.uk/northdowns Tel 01622 221525.

