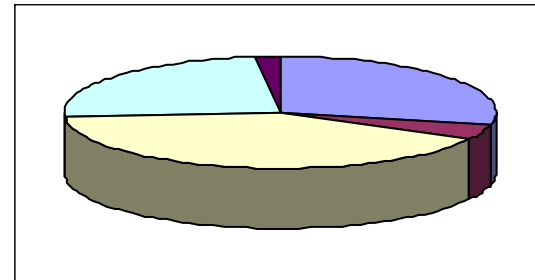
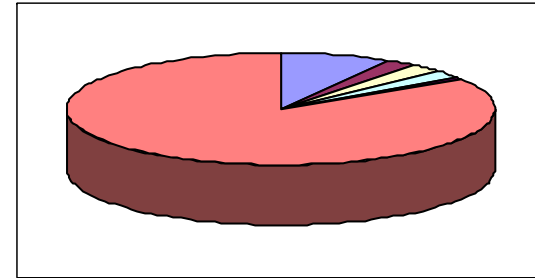


A year in view 2009 - 2010



Income	08/09	09/10
Kent County Council (inc. in kind)	36,000	36,000
Environment Agency	10,000	10,000
Canterbury City Council	10,382	10,692
Ashford Borough Council	10,624	10,628
Robert Brett & Sons	7,500	3,000
Project income (capital & revenue)	243,856	366,053
Total	314,754	436,373

Expenditure	08/09	09/10
Running costs	129,059	124,053
KCC costs	20,000	20,000
Project costs	70,450	177,392
Project income carry forward	92,425	106,928
Replacement/contingency fund	3,000	8,000
Total	314,754	436,373



The KSCP is **highly cost effective** with over £30 generated in 2009/10 for every £1 of core funding from Ashford Borough Council, Canterbury City Council and the Environment Agency.

The year ahead - ten key activities

Chartham to Canterbury Riverside shared use path

Construction should be completed in 2010 and KSCP will promote the route in 2011 as well as delivering wildlife habitat improvements alongside the path.

Blean Access and Interpretative Plan

The KSCP will, with the Blean Initiative, implement some of the actions in this plan including the production of interpretive panels and, working with the Kent Wildlife Trust, a Big Blean Recreational Walking Route.

King's Wood - Explore & Enjoy

Working with the Friends of King's Wood the KSCP will produce a leaflet highlighting four fantastic walks in the wood.

Ashford Green Corridor

An outdoor activities programme for all ages will be run again in the summer.



Woody Wonders at Buxford Meadow

Chairman of Steering Group

Dr Alan Rogers

Staff

Jon Shelton - Partnership Manager
Debbie Adams - Countryside Officer, Ashford
Carol Donaldson - Countryside Officer, Canterbury and Wantsum
Diane Comley - Project Officer (PT)

Kentish Stour Countryside Partnership

Little Olanthigh Road
Sidlands Farm
Wye
Ashford
Kent TN25 5DQ

Tel.: 01233 813307
E-mail: kentishstour@kent.gov.uk
www.kentishstour.org.uk
www.ashfordgreencorridor.org.uk

River Stour Internal Drainage Board (IDB) Biodiversity Action Plan (BAP)

The IDB BAP will be implemented with KSCP delivering their actions.

Landscape Enhancement Partnership Scheme (LEPS)

We will promote this scheme in 2010 providing an increase in projects.

Westgate Gardens

The KSCP will support Canterbury City Council's Heritage Lottery application for Westgate Gardens and Toddlers Cove.

Crab and Winkle Way

The Partnership will implement some improvements to the surface of this popular path.

Free Trees

The KSCP will run the Free Tree scheme again from July to December.

Kingsnorth Buffer Zone

We will construct up to eight ponds to the south of Ashford working with Ashford Borough Council.



The KSCP conserves, enhances and promotes the countryside and urban green space of the Stour Valley. It is one of nine countryside/coastal partnerships in Kent and covers the largest area. In 2009/10 the Partnership carried out hundreds of projects from Lenham in the west, to Richborough in the east, to the fringes of Whitstable in the north, and Pluckley to the south. It is grateful to its core supporters - Ashford Borough Council, Canterbury City Council, Environment Agency and Kent County Council, without which it could not operate. The Partnership works to a Business Plan and Annual Action Plan that are closely aligned to the objectives of its core supporters. The KSCP would like to **thank** all those involved with the Partnership, and especially the volunteers, for making a real difference to the landscape, wildlife and communities of this part of Kent.

Working with local communities

We supported **16 site based community groups** with practical help managing land for wildlife. We also helped with four school/village nature areas. In Mersham, south of Ashford, we worked with the school's gardening club to improve the playing field for wildlife. In Canterbury we did a number of projects to assist the Friends of Ham Brook Marshes and Kent Enterprise Trust.

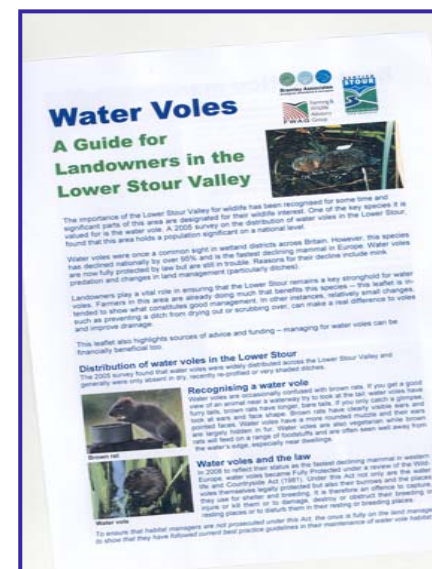


A community day at Mersham Playing Field



Cutting the meadow at Ham Brook

Advising on land management



The Water Vole guide



The newly planted Savannah Wood on the Mersham Hatch Estate

We carried out **20 initial advisory visits** in addition to advice and support on existing sites. We advised and delivered on the planting of 2ha (5 acres) of new woodland for Balfour Beatty Mott McDonald by working with the Mersham Hatch Estate. The woodland is specifically to support Hazel Dormice. We carried out a project to inform and help landowners with management for Water Vole including training days, site visits, and the publication of a guide.

Riverside work

We helped the Environment Agency with river habitat creation projects in Ashford and Westgate Gardens in Canterbury. We worked with Godinton Estate to improve riverside habitat and we continued with the control of Himalayan Balsam.



Planting aquatic wildflowers in Westgate Gardens, Canterbury



Planting following in channel works at Givaudan, Ashford

Landscape Enhancement Partnership Scheme

With help from Interreg (European) funding the LEPS scheme delivered work at **seven sites** to improve landscape quality and wildlife habitat costing £14,789.



300m of hedge planted at Winchcombe Oast, Crundale, in the Kent Downs Area of Outstanding Natural Beauty

Our European partnership

We worked on the second year of four, of an Interreg scheme with partners including Parc naturel regional des Caps et Marais d'Opale in Nord Pas De Calais. Funding was spent on LEPS, urban wildlife habitats, woodland habitats, and exchanges with French groups.



A French group visiting Givaudan as part of a tour through the Ashford Green Corridor



Installing waymarkers at Curtis Wood, Herne



Water Vole

Supporting volunteers

991 work days!

We ran 100 volunteer mid week tasks helping to plant 700m of hedge, clearing scrub from eight sites, and 15 days were spent clearing invasive plants, such as Ragwort, from wildlife sites.



Ragwort pulling at Chilston Park, Lenham, Local Wildlife Site

Surveys, monitoring and plans

The KSCP developed its partnership with the River Stour Internal Drainage Board by delivering a Biodiversity Action Plan for the Board. We carried out a sample survey for Water Vole on some of the drainage channels we did an in depth survey on in 2005. We continued to monitor 42 barn owl boxes and we erected a further six.

Opening up access

Work started in June on the 5km Canterbury to Chartham riverside shared use path. KSCP chairs the Working Group meetings and has raised **£250,000** towards the cost of building the path. The path should be completed by autumn 2010. Volunteers built bridges, and installed gates and waymarkers at many locations in the KSCP area.



Construction of the Canterbury to Chartham shared use path

Prioritising 'designated' sites

We worked on **25 sites in the Kent Downs AONB**. Working with the Forestry Commission we carried out £40,000 of work at Denge Wood, Waltham, and Covert Wood, Barham to widen rides (forest tracks), create chalk grassland and heathland, to benefit species such as the Duke of Burgundy butterfly.



Duke of Burgundy (Sam Ellis)

We worked on **16 Local Wildlife Sites** with management recommendations at an additional three sites.



Ride widening at Covert Wood Local Wildlife Site, Barham

We worked on **4 Sites of Special Scientific Interest (SSSIs)**. At Charing Beech Hangers SSSI we removed 900 stems of invasive sycamore to improve the biodiversity of the wood.



Sycamore felling at Charing Beech Hangers

Interpretation, events and guided walks

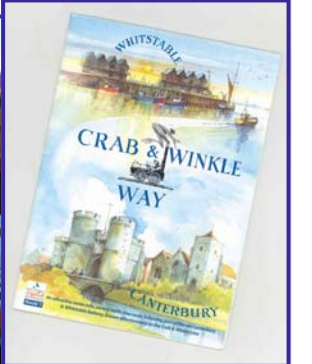
We ran a summer programme of events in the Ashford Green Corridor and events for, amongst others, Canterbury Festival, Charing Alderbed Meadow Community Group, Friends of King's Wood, Swadelands School and Ashford Borough Council at Mersham and Hothfield Play Areas. In **total 1600** adults and young people were directly involved in these activities. We produced the fourth Crab and Winkle Way leaflet, over **100,000** leaflets have now been printed since 1999.



In the river in the Ashford Green Corridor



Mouse inspects his onlookers at Charing Alderbed Meadow



The very popular Crab and Winkle Way leaflet

Work with local companies

We continued our good working relationship with **Brett, Viridor Credits and Givaudan**. We carried out an excellent woodland creation project with **Balfour Beatty Mott McDonald** and we benefitted from the sponsorship by **Network Rail** of the Kent Free Tree Scheme. KSCP distributed more free trees than any other body, over 10,000.



Planting trees in Canterbury

Raising our profile

The Partnership continued to maintain a high profile locally with the publication of the Stour View newsletter, touring of the display boards, various press items, and the development of our KSCP and Ashford Green Corridor web sites. We helped the BBC, Cbeebies, with filming at No Man's Orchard, a piece which ran every morning for 3 months.



Cbeebies crew at No Man's Orchard