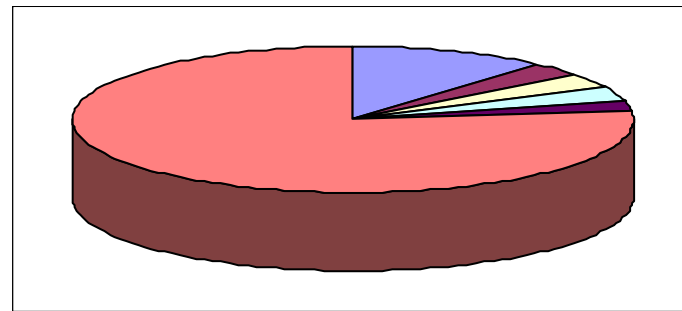


Income

Kent County Council (inc. in kind)	36,000
Environment Agency	10,000
Canterbury City Council	10,382
Ashford Borough Council	10,464
Robert Brett & Sons	7,500
Project income (capital & revenue)	243,856

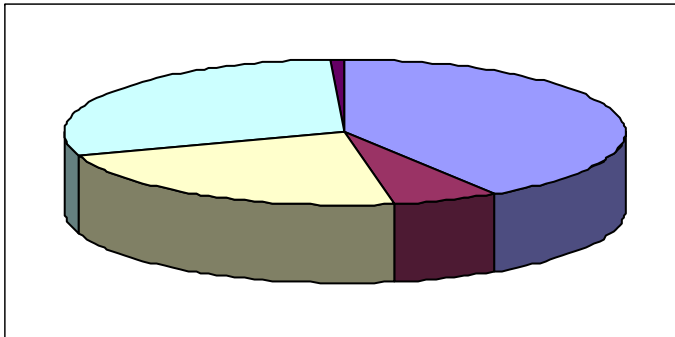
Total 314,754



Expenditure

Running costs	129,059
KCC costs	20,000
Project costs	70,450
Project income carry forward	92,245
Replacement/contingency fund	3,000

Total 314,754



The year ahead - ten key activities

Chartham to Canterbury Riverside shared use path

Good progress was made with this project in 2008. Construction should begin in 2009.

Blean Access and Interpretative Plan

The KSCP will, with the Blean Initiative, move forward some of the actions in this plan. KSCP has secured funding for the production of interpretive panels in the Blean.

Evegate Business Park Countryside

Work will be completed on promoting the natural green space and wetland area adjacent to Evegate Business Park.

Ashford Green Corridor

An outdoor activities programme for all ages will be run again in the summer.

River Stour Internal Drainage Board (IDB) Biodiversity Action Plan (BAP)

A biodiversity action plan will be drafted for the IDB.

Woodland Biodiversity

In partnership with the Forestry Commission, funded by Viridor Credits and Interreg, two major woodland contracts to benefit wildlife will be started at Denge Wood and Covert Wood.

Dormice

The KSCP will plant 2.5 ha (6 acres) of new woodland to benefit Dormice in partnership with Mersham Hatch Estates, Interroute and the Highways Agency.

Crab and Winkle Way

The popular Crab and Winkle Way leaflet will be re-drafted and published by KSCP in partnership with the Crab and Winkle Line Trust.

Free Trees

The KSCP will expand the Free Tree scheme to the borough of Ashford, so covering the whole of the Partnership area.

Water Voles

We will continue to prioritise management work for Water Voles with specific site visits, written management recommendations, survey and practical work.

Chairman of Steering Group

Dr Alan Rogers

Staff

Jon Shelton – Partnership Manager
 Debbie Adams - Countryside Officer, Ashford
 Matt Hayes – Countryside Officer, Canterbury and Wantsum (to Jan 2009)
 Carol Donaldson - Countryside Officer, Canterbury and Wantsum (from March 2009)
 Diane Comley – Project Officer (PT)

Kentish Stour Countryside Partnership
 Little Olantigh Road
 Sidelands Farm
 Wye
 Ashford
 Kent TN25 5DQ

Tel.: 01233 813307
 E-mail: kentishstour@kent.gov.uk
 www.kentishstour.org.uk
 www.ashfordgreencorridor.org.uk



A year in view

A year in view
 2008 - 2009



The KSCP aim to conserve, enhance and promote the countryside and urban green space of the Stour Valley. In 2008/09 the Partnership carried out hundreds of projects from Lenham in the west, to Sandwich in the east, to the fringes of Whitstable in the north, and Aldington to the south. This report contains a summary of these projects.

Working with local communities

We supported 10 site based community groups and two school nature areas. At the newly created Keir's Meadow Nature Reserve in Blean we created a new 1ha wildflower meadow, dug a wildlife pond, planted trees and, with the help of local people, planted 250m of hedge. In Ashford we oversaw the development of the North School's Nature area.



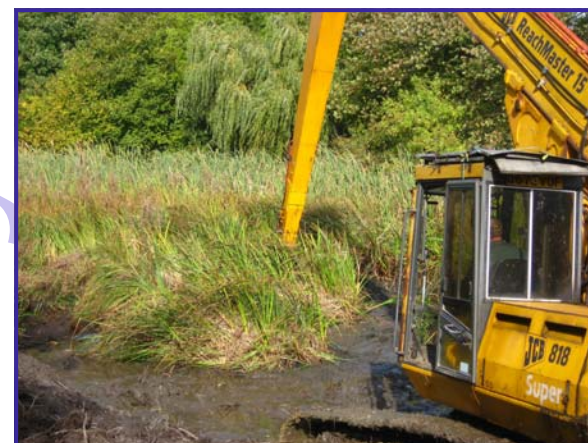
Planting at Keir's Meadow, Blean



Ashford North School's new pond

Advising on land management

We carried out 10 initial advisory visits in addition to advice and support on existing sites. At Bowley Mill Local Wildlife Site near Lenham, we organised a £42,000 project to restore part of the 0.9 ha (2.25 acre) pond. On the Mersham Hatch Estate we managed the creation of a pond and three scrapes, and converted 4.4ha (11 acres) of arable land to wildflower meadow.



Bowley Mill Pond, near Lenham



A new scrape on the Mersham Hatch Estate

Riverside work

We delivered work for two key species; White-clawed Crayfish and Water Vole. We obtained funding to run Water Vole training courses for landowners and advisors and produced information sheets for land managers.



White-clawed Crayfish



Water Vole

KSCP Grant scheme

With help from Interreg (European) funding in 2008/2009 the KSCP delivered conservation work at nine sites.



Scrape created at The Stables, Bilting, in the AONB

A new European partnership

We were successful, with partners including Parc naturel regional des Caps et Marais d'Opale in Nord Pas De Calais, with an application for Interreg funding to the value of **£200,000**. This money will be spent by the KSCP over four years on conservation projects, urban wildlife habitats, woodland habitats, and volunteer exchanges with Les Blongios, a French volunteer conservation group.



Les Blongios working at Coldblow Farm, Wye, with KSCP volunteers

Supporting volunteers

1066 work days!

We ran 100 volunteer mid week tasks helping to plant 1070m of hedge, erecting 1320m of stock fencing and 15 days were spent clearing invasive plants, such as Himalayan Balsam from the River Stour.



Clearing Himalayan Balsam

Surveys, monitoring and plans

As well as providing management plans the KSCP commissioned an ecological survey of some of the land affected by the proposed Canterbury to Chartham Riverside Path. We continued to monitor the 42 Barn Owl boxes that the Partnership has erected.



Opening up access

The KSCP continued to push forward the development of the Canterbury to Chartham shared use path by chairing the Working Group meetings and raising **£250,000** towards the cost of building the 5km path.



Installing steps at Cherry Downs

Volunteers built bridges, steps and installed waymarkers at many locations.

Prioritising 'designated' sites

We worked on **29 sites in the Kent Downs AONB**. Working with the Forestry Commission we carried out an £18,000 contract at Eggringe Wood (Crundale) to widen rides (forest tracks) by removing trees to benefit species such as the Grizzled Skipper butterfly.



Grizzled Skipper

Scrub clearance at Wraik Hill



We worked on **15 Local Wildlife Sites** including major restoration work to Wraik Hill and Foxes Cross Local Nature Reserve (Whitstable) involving large scale scrub clearance and pond creation.

We worked on **3 Sites of Special Scientific Interest (SSSIs)**. We entered Charing Beech Hangers SSSI into a Woodland Grant Scheme on behalf of the landowner and started carrying out management work.



A veteran tree at Charing Beech Hangers

Interpretation, events and guided walks

We ran a summer programme of events in the Ashford Green Corridor and events for, amongst others, Canterbury Festival, Charing Alderbed Meadow Community Group, Friends of King's Wood, Swadelands School, Ashford Borough Council at Willesborough Dykes and Mersham Play Area, and No Man's Orchard Management Committee.

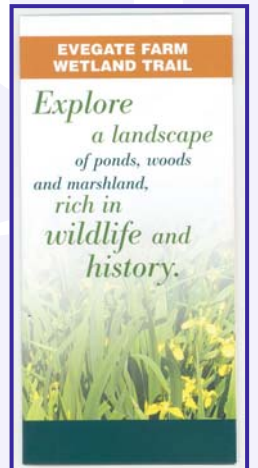
In total 2202 adults and young people were directly involved in these activities.



We commissioned, helped to install and launched a new serpent at No Man's Community Orchard



A group from Swadelands School at Bull Heath, Lenham on a conservation week



An interpretive leaflet for Evigate Business Centre

Work with local companies

We continued our good working relationship with Brett whilst developing a new relationship with Viridor. Viridor Credits supported three projects with **£32,000** including a new pond in King's Wood. Our work with Givaudan (formerly Quest), in Ashford, continued. The company demonstrates some of the most forward thinking environmental credentials in developing their grounds for wildlife.



Tree planting at Givaudan



Raising our profile

The Project continued to maintain a high profile locally with the publication of the Stour View newsletter (left), touring of the display boards, various press items, and the development of our KSCP and Ashford Green Corridor web sites.