



# introduction

# project area

1993  
2008

**The Kentish Stour Countryside Project was launched in 1993.**

**Our Mission Statement is:**  
*To conserve, enhance and promote the countryside and urban green space in the catchment of the River Stour.*

**Our aims are:**

- To conserve and enhance special landscapes, wildlife habitats, and rural heritage sites.
- To encourage recreational activities that do not conflict with the main aim of conserving and enhancing the natural beauty and interest of the area.
- To promote greater respect, understanding, interest and enjoyment of the Stour Valley amongst the local community and those visiting the area.
- To increase the benefits to the rural economy from sustainable rural industry, recreation activities and tourism enterprises.
- To encourage and support local communities in conserving their natural heritage.



Community pond clear up, Old Park, Canterbury.



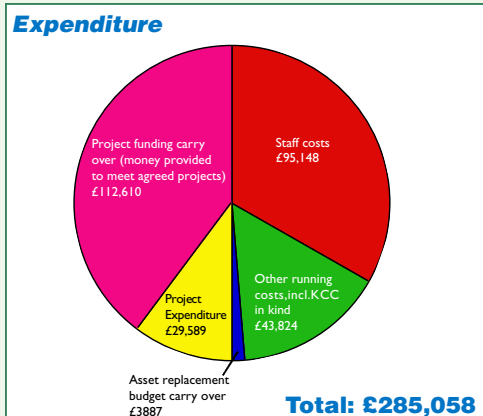
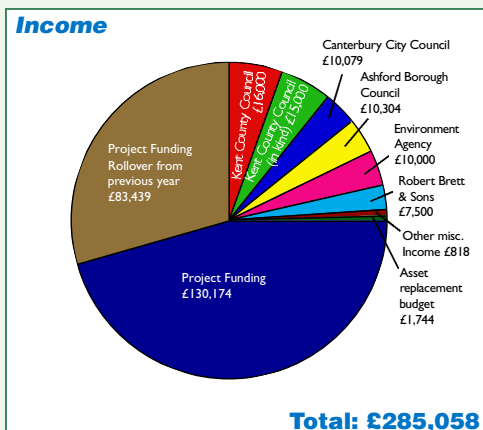
Nature area construction Caldecott College, Smeeth.



In 2007/08, our three year Your Heritage funded project in the Ashford Green Corridor (£104,000) was completed; Viridor Landfill Tax Credit provided agreements for three projects (£33,000); KCC Member supported purchase of a new minibus, shown left (£14,000); and an application was made to the European Inter-Regional Development Fund (Interreg) (£200,000).

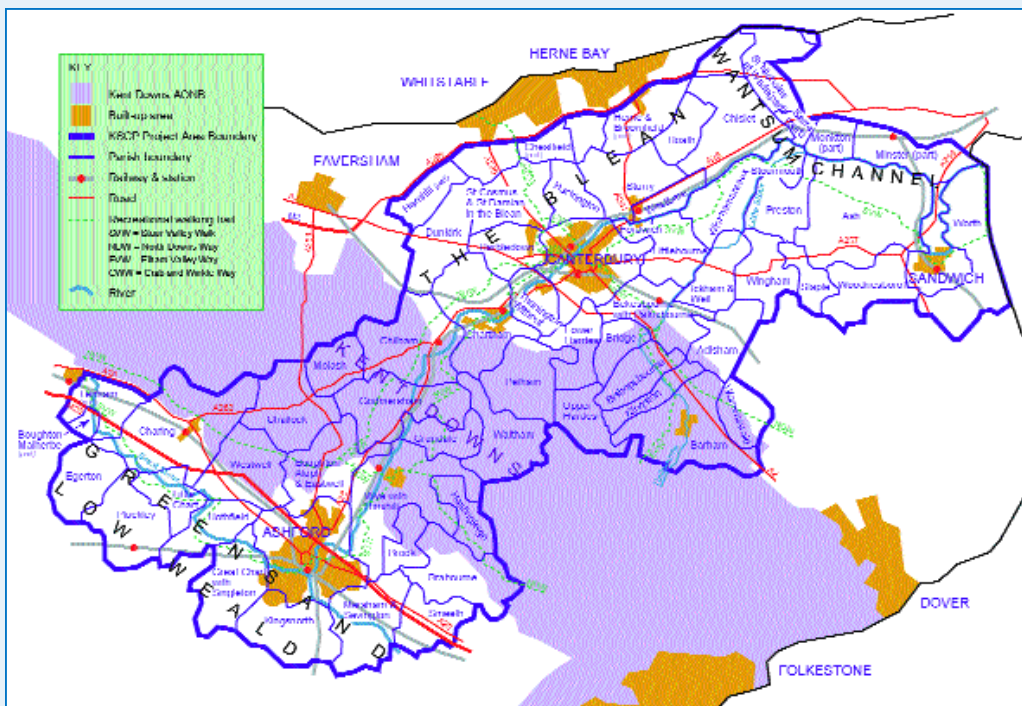
## How the project is financed

Figures for 1/4/2007-31/3/2008



**The Project area covers 705 sq. kilometres (271 sq. miles) of varied landscapes including downland, woodland, orchards, wetlands, riverside, and parkland.**

**Changing agricultural practices, built development, and gravel extraction have all had a significant impact upon the landscape, wildlife, heritage and social fabric of the area.**



Wild flower meadow creation in the Ashford Green Corridor.



Hedge planting on the Downs.



Fencing at Anvil Green Farm, Petham.

# the year ahead 2008-2009

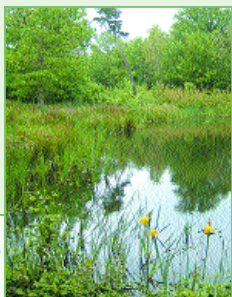


# fifteen years of action

1993  
2008

- Continuation of the KSCP Countryside Conservation Grant Scheme
- Priority work at Charing Beech Hangers SSSI and eight Local Wildlife Sites
- Launch of the Free Trees Scheme in Canterbury and Thanet after a 6 year absence
- Assisting the Environment Agency with biodiversity improvements in the River Stour
- Production of an Ashford River Management Plan
- Identification of five more sites for barn owl boxes
- Major restoration of Bowley Mill pond near Lenham
- Creation of a third pond at King's Wood
- Major woodland biodiversity work in partnership with the Forestry Commission
- Fencing and scrub removal at Wraik Hill and Foxes Cross Local Nature Reserve near Whitstable
- New wild flower meadows, scrapes and ponds at Hatch Park, Brabourne

- Start of construction of a 5km riverside shared use path between Canterbury and Chartham
- Start of planning for Faversham to Canterbury, and Herne Bay to Canterbury cycle paths
- Promotion of Evegate countryside through a new trail, leaflet and panel
- Production of a series of interpretive panels for the Blean
- A summer programme of events for the Ashford Green Corridor
- An updated Crab and Winkle Way leaflet
- South Willesborough Dykes educational project, to involve 450 children
- Assistance in running the No Man's Orchard 60 year event in July
- Start of work at Blean Parish Council Nature Reserve
- The development of our partnership with the Parc Naturel Regional des Caps et Marais d'Opale



Pond created through a KSCP Countryside Conservation Grant at The Forest, Pluckley.

**Project Chairman: Dr Alan Rogers**

**Staff during 2007/08:**

**Project Manager: Jon Shelton**

**Countryside Officer Canterbury & Wantsum: Matt Hayes**

**Countryside Officer Ashford: Harri Goldsmith (covering a secondment to October) Debbie Adams (from October)**

**Ashford Green Corridor Officer: Emma Griffiths (to August)**

**Project Officer Assistant: Craig Edwards (P/T) (from September)**

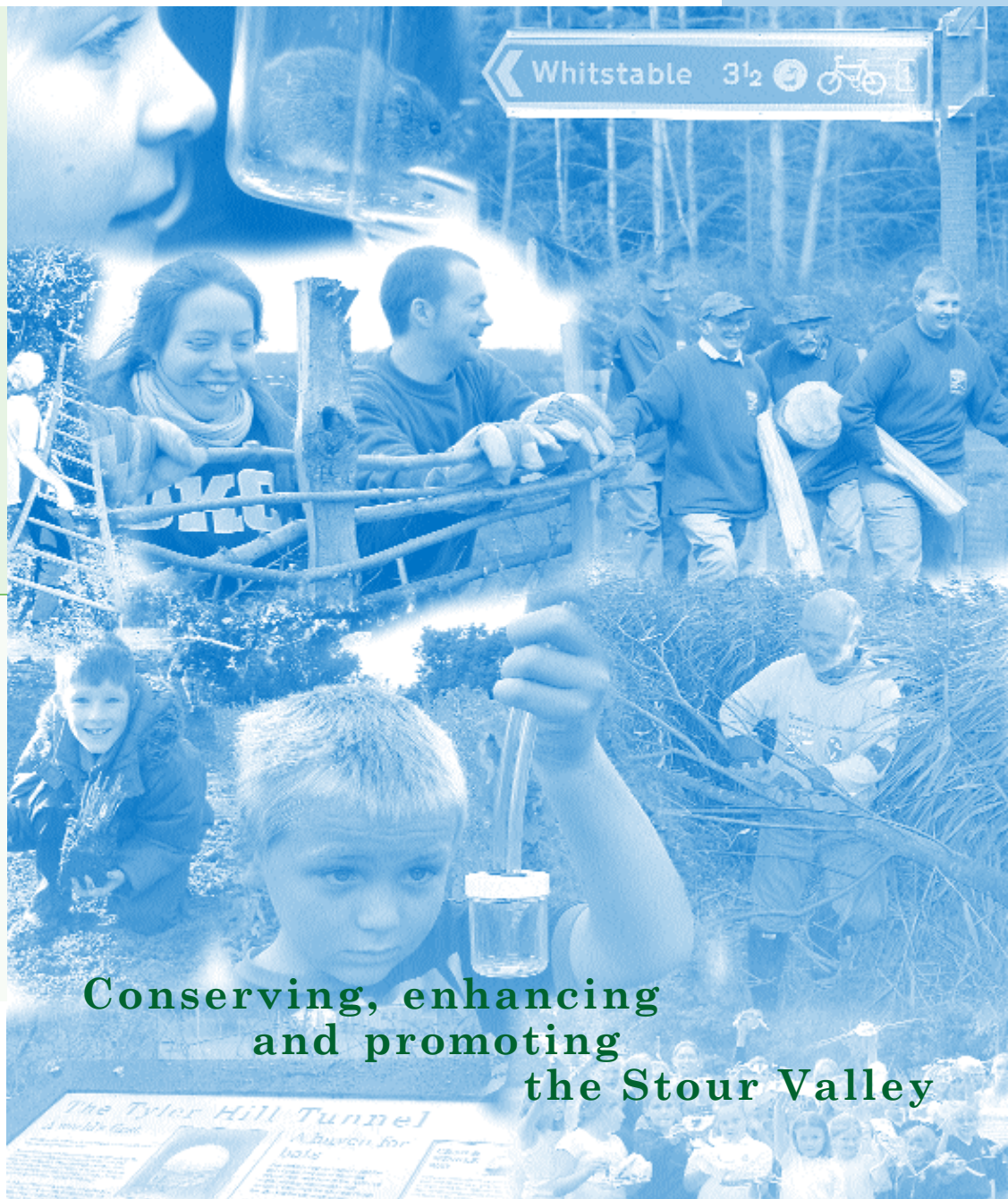
**Voluntary Officers: Craig Edwards, Simon Houghton**

**Kentish Stour Countryside Project**  
**Sidlands Farm**  
**Wye**  
**Ashford**  
**Kent**  
**TN25 5DQ**

**Tel: 01233 813307**

**Email: kentishstour@kent.gov.uk**

**www.kentishstour.org.uk**



**Conserving, enhancing and promoting the Stour Valley**

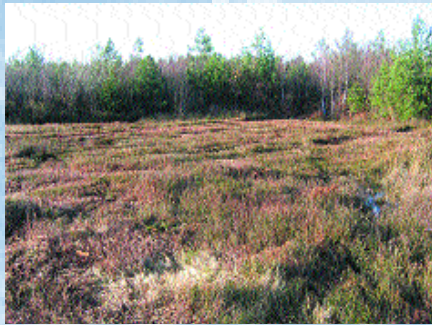




# 15 years of achievements

*Thank you to all our volunteers  
and all the organisations who  
have enabled us to achieve so  
much in the last fifteen years!*

**£4,750,000 raised for  
countryside and green  
spaces in towns.**



Over £50,000 has been raised by KSCP  
for spending in Clowes Wood, Chestfield  
on biodiversity and access work.

**160 ponds created or managed; over 400  
surveyed.**



Pond constructed in Brabourne in  
2004, with a KSCP countryside  
grant, and in May 2007.



**Hundreds of community projects**

**65 river based  
conservation projects**

Work to enhance the  
river for white  
clawed crayfish on  
the Godinton Estate.



Installing a barn owl  
box near Wingham.



A moth evening at No  
Man's Orchard, Chartham  
Hatch, one of 36 events  
organised by the  
Canterbury Greenspace  
Project.

**In total over 17,000 workdays (one volunteer volunteering  
for one day) have been  
carried out.**



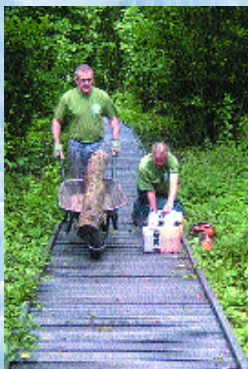
**Over 26 miles of hedgerow planted.**

Hedge planting in Hastingsleigh.



Bridge construction in the Blean.

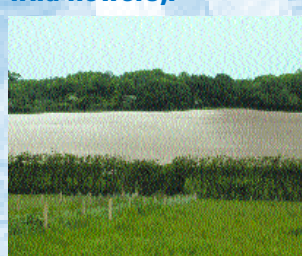
**Practical  
access work**



Overseeing the  
construction of 200m  
of boardwalk at  
Charing Alderbed in  
2005.

**Through the Countryside Stewardship  
Scheme: 156 hectares (ha) (390 acres) of  
arable land returned to wet pasture or  
neutral/chalk grassland; creation of 171  
miles of 6 metre (or equivalent to)  
arable margins (edges of arable fields  
sown with native grasses and  
wild flowers).**

16.5ha (41 acres)  
of arable land  
was reverted to  
chalk grassland  
in 2004 at Dane  
Court Farm,  
Chilham. An  
otter holt was  
installed at  
Great Ware.



**Creation of Stour  
Valley Arts and the  
commissioning of  
art based projects  
along the Crab and  
Winkle Way and  
other locations.**  
The bike rack at the  
start of the Crab  
and Winkle Way.



**Development of  
recreation routes  
such as the Elham  
Valley Way, Stour  
Valley Walk and Crab  
and Winkle Way.**



**Interpretation in  
the form of panels,  
guided walks, and  
the production of  
guides and  
leaflets.**



**Work on  
protected sites**

Weatherlees Hill, Site of Special Scientific  
Interest (SSSI), Richborough, where KSCP  
cleared scrub, fenced the 26ha (65 acres)  
site, and found a grazer in 2003-2004.



**The designation  
of new sites.**

Tyler Hill Local Nature  
Reserve, one of four  
LNRs the KSCP has  
helped to designate.



## achievements last year

**2007  
Riverside projects**

**846 volunteer workdays**



Hedge layed at Chislet Park.  
Fencing chalk grassland at  
Jumping Downs Local Nature  
Reserve near Barham.



Clearing the invasive Himalayan  
balsam, from the riverside in Ashford.

**Volunteer exchanges continued  
with Les Blongios, an  
arrangement set up through  
the Parc Natural Regional des  
Caps et Marais d'Opale.**



**13 new site advisory visits to  
landowners including farmers  
and community groups.**

**Help with the management  
of three SSSIs and 13 Local  
Wildlife Sites and work on  
18 sites in the Kent Downs  
Area of Outstanding Natural  
Beauty.**



Clearing scrub from the  
reedbed at Stodmarsh  
National Nature Reserve.

**The Ashford Green Corridor  
Project was very busy in 2007.  
Work included 12 interpretive  
panels, an education pack, a  
community heritage project, and  
the installation of sculptures. In  
addition a revamped Ashford  
Green Corridor leaflet was  
produced and a summer events  
programme run.**



Interpretive panel

A summer  
children's  
event

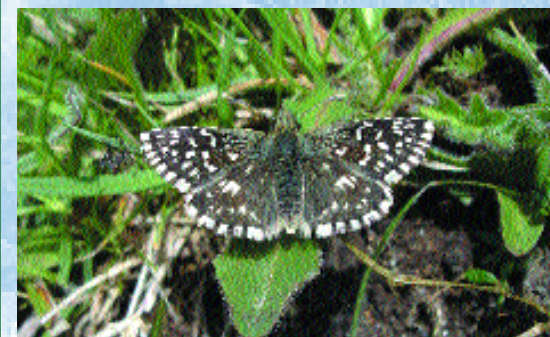


**2662  
metres  
(1.7 miles)  
of hedge  
planted.**



Hedge planting with Canterbury College students  
at Wraik Hill Local Nature Reserve, Whitstable.

**The start of a £100,000 project on  
Woodland Biodiversity and Access working  
mainly in the Forestry Commission woods  
of Denge, Covert (Barham), King's  
(Challock), and Clowes (Blean).**



Ride widening at Eggringe Wood benefitting wild  
flowers, and butterflies, such as the grizzled skipper.

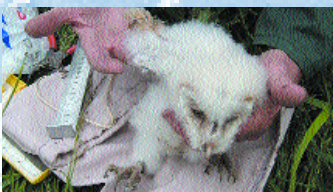
**Seven ponds managed  
or restored.**



A small pond restored at  
Lenacre, Boughton Aluph.

**Work with local companies such  
as Viridor, Givaudan and Brett.**

**Wildlife surveys which  
included surveying for barn  
owls, otters, and dormice.**



Barn owl chick

**Work with 14 site based  
community groups.**



Leading a guided walk for  
the Jumping Downs Trust.

**15 access related  
projects**

Steps were  
constructed at  
Chartham to  
improve one of the  
KSCP Train Ride to  
Ramble routes,  
whilst a seat was  
commissioned on  
the North Downs  
Way at Wye.

